



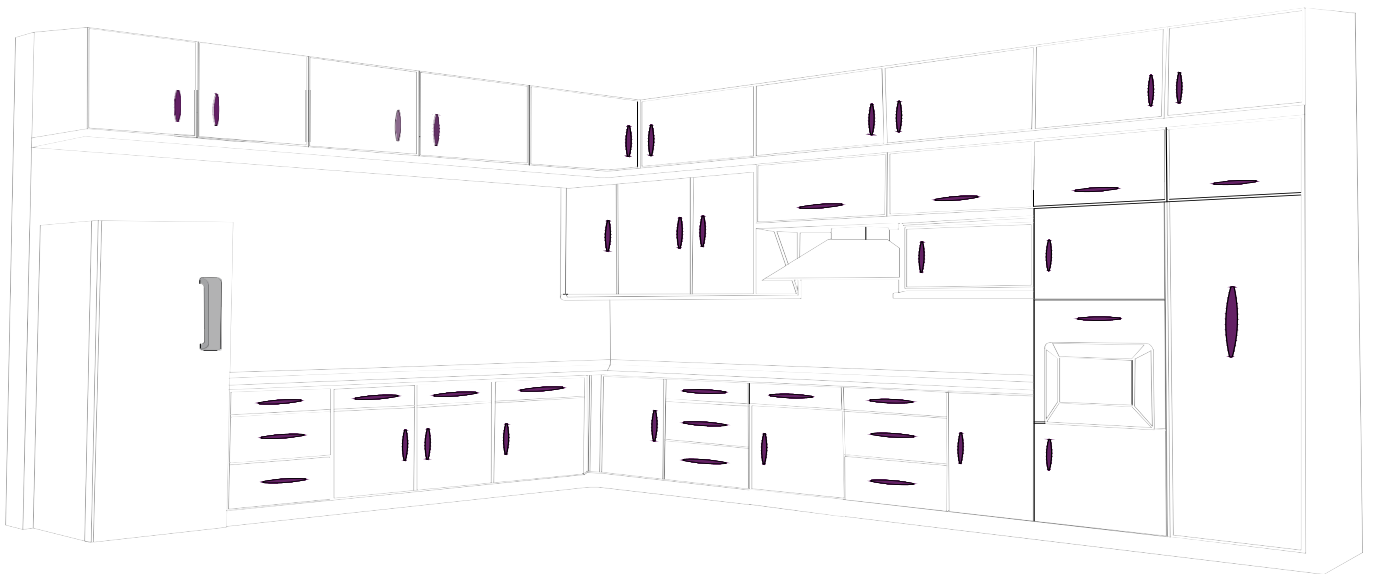
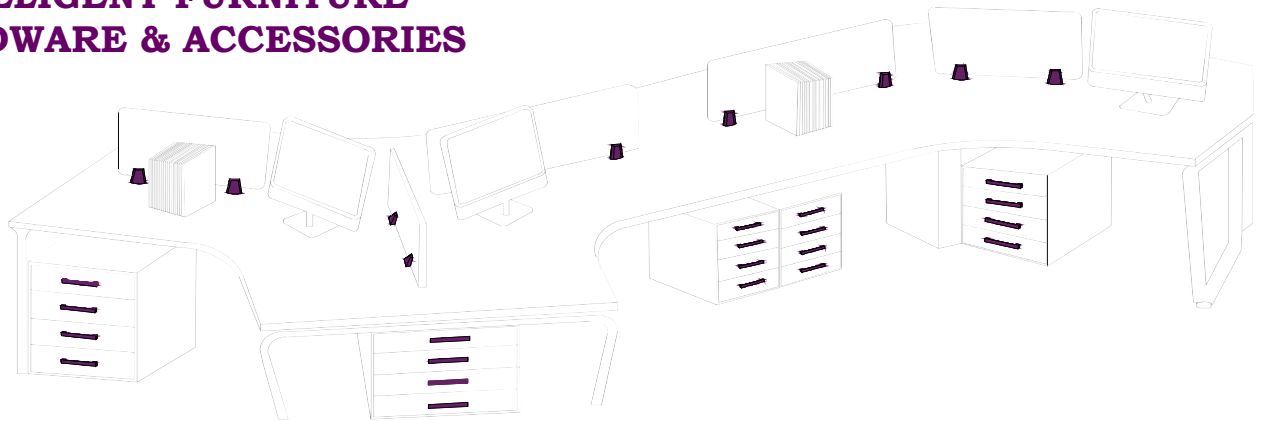
Exclusive Interior Fittings

Since 1999



EXCLUSIVE INTERIOR FITTING

**WELCOME TO THE FUTURE OF
INTELLIGENT FURNITURE
HARDWARE & ACCESSORIES**



CUP FURNITURE HANDLE CATALOGUE



CH



EFH



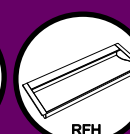
CFK



DFK



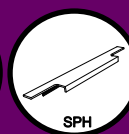
KFH



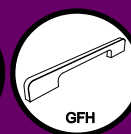
RFH



SFH



SPH



GFH



SL

About Us

Our story

KOMAL MANUFACTURING COMPANY HAS BEEN A MAJOR PLAYER IN THE HANDLE INDUSTRY FOR MORE THAN 25 YEARS. THE PIONEER OF THIS BUSINESS WAS MY FATHER MR PRADIP MEHTA UNDER WHOSE GUIDANCE THE COMPANY FLOURISHED AND NOW IT IS KNOWN AS KONARK MANUFACTURING COMPANY. SECOND GENERATION IS RUNNING THIS BUSINESS, THIS MAKES US YOUNG, HIGH ENERGISED AND PROFESSIONAL AND EXTREMELY CUSTOMER ORIENTED.

Management

THE MANAGEMENT TEAM AND THE EMPLOYEES ARE EXPERIENCED IN THEIR AREA. INNOVATING AND INTRODUCING NEW PRODUCTS IS OUR KEY TO BE UNIQUE IN THE MARKET.

WE HAVE AN IN-HOUSE TEAM OF CREATIVE PRODUCT DESIGNERS WHO ARE CONTINUOUSLY WORKING TOWARDS DEVELOPING INNOVATIVE DESIGNS THAT WILL SET NEW TRENDS IN MARKET. THE MANUFACTURING PLANT IS WELL EQUIPED WITH THE LATEST TECHNOLOGY MACHINES AND A TECHNICALLY QUALIFIED TEAM TO MEET THE INCREASING NEEDS OF THE CUSTOMER.

OUR MISSION

WE ARE COMMITTED TO PROVIDE EXCELLENT QUALITY GOODS AND SERVICES TO OUR CUSTOMERS AND TO MEET OUR GOAL, ORGANISATION SHALL STRIVE. EXCELLENT QUALITY OF PRODUCTS, PROMPT AND POSITIVE RESPONSE, ON TIME DELIVERY OF GOODS WITH A MISSION TO MAKE CONTINUAL IMPROVEMENT IN ALL ASPECTS.

OUR AIM

WE IN KONARK BELIEVE TO CREATE AND CULTIVATE LONG TERM RELATIONSHIPS WITH OUR CLIENTS. CUSTOMERS HAVE THE POWER TO CHOOSE IN THIS COMPETITIVE AND OPEN MARKET.

OUR AIM IS TO PROVIDE HIGH QUALITY SERVICE, ALONG WITH FAIR AND COMPETITIVE PRICING AND THUS OFFERING THE CUSTOMER OPTIMAL RETURN ON INVESTMENT.

FOUNDER AND CEO

AS THE FOUNDER OF KONARK MANUFACTURING COMPANY, MR CHETAN IS RESPONSIBLE FOR RUNNING ALL FACETS OF THE BUSINESS. HE IS A VISIONARY THINKER WITH GLOBAL PERSPECTIVE AND ENTREPRENEURIAL DRIVE. HE HAS AN EXPERIENCE OF OVER 20 YEARS IN THIS FIELD.

AS A MECHANICAL ENGINEER HIMSELF HE IS IN DEPTH INVOLVED WITH ALL THE ASPECTS OF MANUFACTURING. DEVELOPING A COMPREHENSIVE MARKETING PLAN AND IMPLEMENTING IT TO INCREASE BRAND AWARENESS AND RECOGNITION. ESTABLISHED A NETWORK OF LOCAL SUPPLIERS FOR EFFICIENT SOURCING OF MATERIALS.



ATTRACTIVE
FINISH



WEATHER PROTECTED
PLATING



VIRGIN MATERIAL



SENSIBLE DESIGN



VARIOUS PATTERN



EASY TO CLEAN



CORROSION
RESISTANCE



FOCUS ON
INNOVATION



SCRATCH
RESISTANCE



FINGERPRINT
RESISTANCE



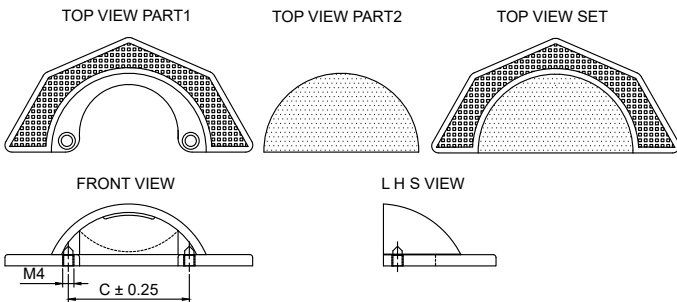
OLEOPHOBIC
COATING

CUP HANDLE



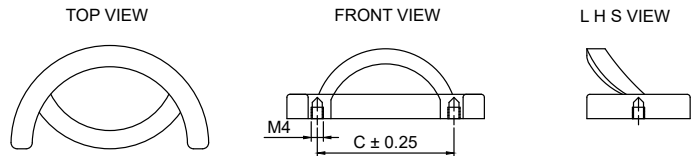
Model : CH-001

Size	Product Code	C
43mm	CH-001 43	43



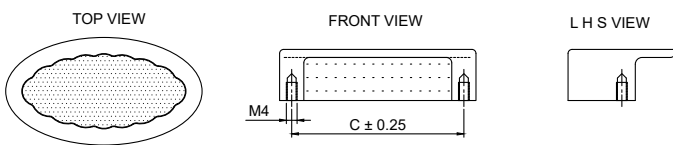
Model : CH-002

Size	Product Code	C
45mm	CH-002 45	45



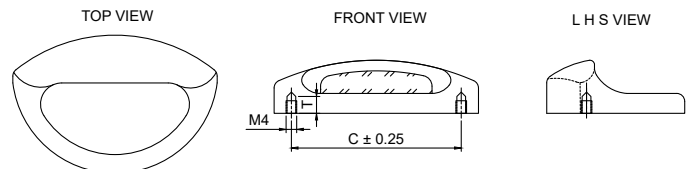
Model : CH-003

Size	Product Code	C
64mm	CH-003 64	64



Model : CH-004

Size	Product Code	C
64mm	CH-004 64	64



FINISH:

MT	CP	SP	MC	BM	RG	BA	CA
Matt	Chrome	Satin	Matt Chrome	Black Matt	Rose Gold	Brass Antique	Copper Antique

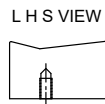
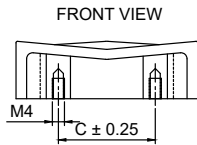
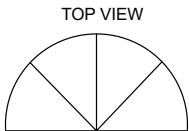
★ Best Sellers.

CUP HANDLE



Model : CH-005

Size	Product Code	C
32mm	CH-005 64	32



FINISH:

MT	CP	SP	MC	BM	RG	BA	CA
Matt	Chrome	Satin	Matt Chrome	Black Matt	Rose Gold	Brass Antique	Copper Antique

[★ Best Sellers.]

Terms & Conditions

1- DISCLAIMER

Manufacturing Agency reserves the right to discontinue or add any product, finish or design without prior notice. The sketches/drawings and images appearing in this price list have been included solely for guidance purposes only. They are not true to scale and do not represent any precise or binding design of the product. Copying or Duplicating the products is strictly prohibited. Only authorized resellers, franchise & distributors appointed by the company are allowed to possess, trade or sell products offered by and from the company. Illegal possession of the goods will result in prosecution.

2- AVAILABILITY

Manufacturing Agency endeavours to keep sufficient stock of the products mentioned in this price list. But orders falling out of average, if not in stock, would be intimated and supplied in due course as specified or agreed by customers in written. Manufacturing Agency requests customers to reconfirm stock position before commitment to the customers.

3- PRICES

All previous prices are superseded by this List Price along with price agreements of any kind with any party. All prices are subject to change without notice. All prices mentioned are Maximum Retail Prices (M.R.P.) i.e. inclusive of all taxes for the end user. All prices are Ex-works and in Indian Rupees (INR) only. The validity period of the price list also applies in case of products that are not included in this price list. All the information provided is subject to error and printing mistakes for which no liability will be accepted.

4- TAX & FREIGHT

Packing, Forwarding & Bardan Charges have to be borne by the buyer. CGST+SGST for Gujarat and IGST for other states would be applicable after the standard discount on the MRP. Additional Freight charges for prompt deliveries by air i.e. courier or flight charges has to be borne by the buyer along with necessary forms. The Tax rate will be subject to change as per the government notifications.

5- ORDERS

Receipt or Possession of this Price List does not grant approval to quote or purchase Manufacturing Agency Products. All orders will be fulfilled by the acceptance of Manufacturing Agency quantity at Manufacturing Agency Price at the time of order. Manufacturing Agency will accept orders via phone, email, fax, sms or courier. Manufacturing Agency reserves the right to decline orders in which the price or quantity of goods is not satisfactory. Any modification to the standard product configuration is considered to be a special order. For a special order the price will vary and no credits will be issued for returned special orders unless authorized by the Directors of Manufacturing Agency. Delivery period of such orders will be decided depending upon the manufacturing process time. Accuracy of phone orders will be determined by the receipt of a written sale order form and an acceptance of the same. The order reference issued on the form will be used for tracking the goods.

6- INVOICE

The final dispatch invoice will be sent to you for confirmation just before the dispatch and a written confirmation for the same will be required by you of that invoice. Any changes in the quantity, price or product etc. has to be rectified immediately and the goods will leave the warehouse only after your confirmation. Any changes will not be accepted later.

7- DELIVERY

We endeavor to make prompt shipment of all orders, but we shall not be held responsible for any loss or damage resulting from delay in filling orders due to causes beyond our control, including delivery of material to us. All responsibility ceases off the goods after it has left our warehouse. Goods intransit are at the risk of the buyer.

Terms & Conditions

8- CLAIMS

All claims due to errors or defects must be submitted, in writing, within 15 days after receipt of goods.

9- PROPER INSTALLATION& MAINTENANCE

Improper installations or any unguided product hampering is not a responsibility of Company.

It is the responsibility of the buyer to ensure the fitness of hardware for the intended purpose. We recommend assessment by appropriate testing in the application and by technical enquiry to our representatives or by understanding the manual provided with the product. Products may be sharp edged or blunt and heavy. Please handle with proper handling techniques and please keep all products away from the reach of children during or before installation. Keep the products in good condition and avoid contact with chemicals, water, paste, dirt and abuse to increase the life of the product. Finishes treated with protective coatings quickly deteriorate if the surface is broken. To prolong the life and maintain the original beauty of the material and the finish, it is important to avoid the use of paint removing solvents, acids, ambro tapes or other strong caustic cleaning solutions. Before painting doors, frames & woodwork. All hardware items should be removed and reinstalled after the paint is dry.

10- RETURNED GOODS

Company will not accept any return goods under any circumstances except manufacturing defects or warehouse mistakes. Customer has up to 6 Months from the date of invoice to return the goods in this case and all goods must be returned in original packaging and be in resalable condition, i.e. unaltered and non-degraded condition along with prior approval. Transportation charges of returned goods must be prepaid by the customer. Product not returned in saleable condition or after 6 Month of issue date is subject to disposal by Company with no credit issued.





Exclusive Interior Fittings.

MADE IN INDIA

MADE FOR WORLD

Mfg. By :

Komal
Manufacturing Co.

Factory Add: Plot No.27 Survey No.224,
Somnath Ind.5, Village:Kothariya,
Gondal Road, Rajkot, 360022.

Mkt.& Dist. By :

Konark
Manufacturing Co.

Office Add: 11/D-502,Neelam Nagar,Phase-2,
Gavan Pada,Mulund (E) Mumbai-400081



www.konark8.com



info@konark8.com



+916357707700

E-mail : chetan@konark8.com

Contact Person : [Chetan Mehta](#)

Contact : [+91-7878757399](tel:+91-7878757399)



MADE IN INDIA
MADE FOR WORLD

