

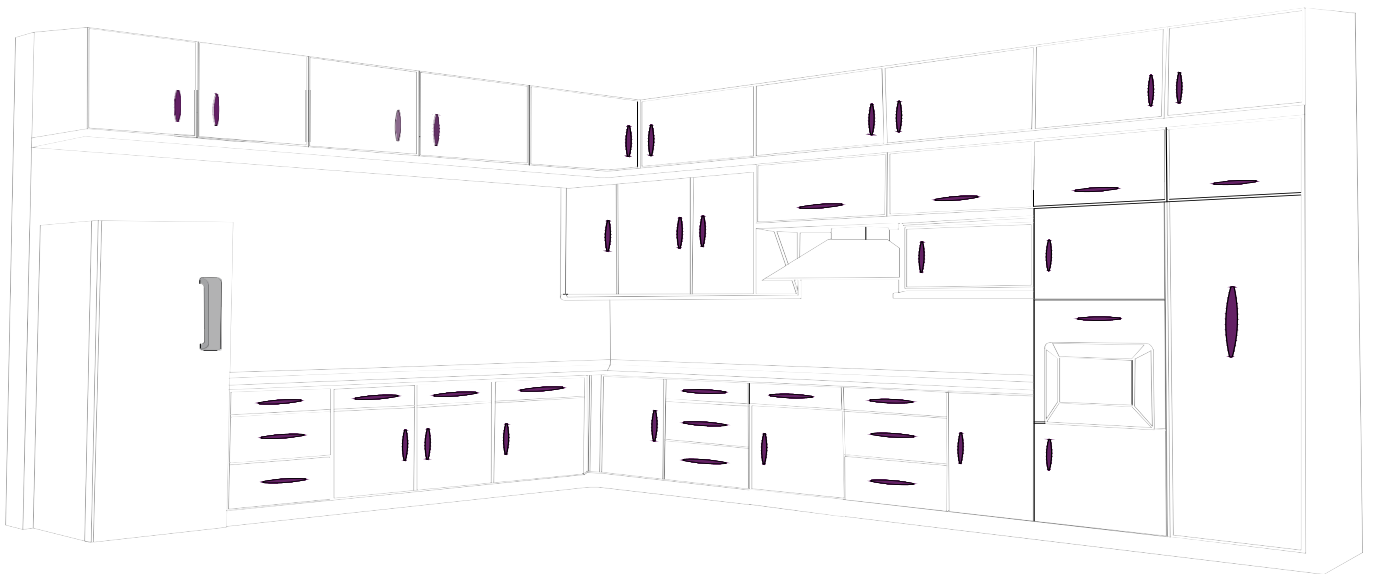
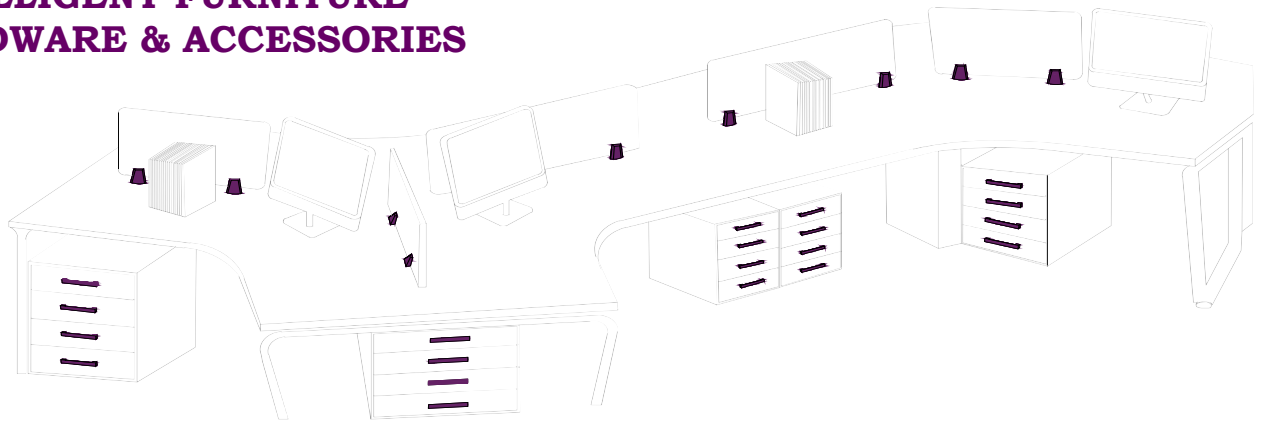


Since 1999

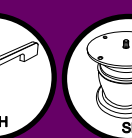
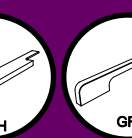
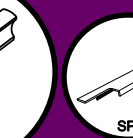


EXCLUSIVE INTERIOR FITTING

**WELCOME TO THE FUTURE OF
INTELLIGENT FURNITURE
HARDWARE & ACCESSORIES**



SLIM FURNITURE HANDLE CATALOGUE



About Us

Our story

KOMAL MANUFACTURING COMPANY HAS BEEN A MAJOR PLAYER IN THE HANDLE INDUSTRY FOR MORE THAN 25 YEARS. THE PIONEER OF THIS BUSINESS WAS MY FATHER MR PRADIP MEHTA UNDER WHOSE GUIDANCE THE COMPANY FLOURISHED AND NOW IT IS KNOWN AS KONARK MANUFACTURING COMPANY. SECOND GENERATION IS RUNNING THIS BUSINESS, THIS MAKES US YOUNG, HIGH ENERGISED AND PROFESSIONAL AND EXTREMELY CUSTOMER ORIENTED.

Management

THE MANAGEMENT TEAM AND THE EMPLOYEES ARE EXPERIENCED IN THEIR AREA. INNOVATING AND INTRODUCING NEW PRODUCTS IS OUR KEY TO BE UNIQUE IN THE MARKET.

WE HAVE AN IN-HOUSE TEAM OF CREATIVE PRODUCT DESIGNERS WHO ARE CONTINUOUSLY WORKING TOWARDS DEVELOPING INNOVATIVE DESIGNS THAT WILL SET NEW TRENDS IN MARKET. THE MANUFACTURING PLANT IS WELL EQUIPED WITH THE LATEST TECHNOLOGY MACHINES AND A TECHNICALLY QUALIFIED TEAM TO MEET THE INCREASING NEEDS OF THE CUSTOMER.

OUR MISSION

WE ARE COMMITTED TO PROVIDE EXCELLENT QUALITY GOODS AND SERVICES TO OUR CUSTOMERS AND TO MEET OUR GOAL, ORGANISATION SHALL STRIVE. EXCELLENT QUALITY OF PRODUCTS, PROMPT AND POSITIVE RESPONSE, ON TIME DELIVERY OF GOODS WITH A MISSION TO MAKE CONTINUAL IMPROVEMENT IN ALL ASPECTS.

OUR AIM

WE IN KONARK BELIEVE TO CREATE AND CULTIVATE LONG TERM RELATIONSHIPS WITH OUR CLIENTS. CUSTOMERS HAVE THE POWER TO CHOOSE IN THIS COMPETITIVE AND OPEN MARKET.

OUR AIM IS TO PROVIDE HIGH QUALITY SERVICE, ALONG WITH FAIR AND COMPETITIVE PRICING AND THUS OFFERING THE CUSTOMER OPTIMAL RETURN ON INVESTMENT.

FOUNDER AND CEO

AS THE FOUNDER OF KONARK MANUFACTURING COMPANY, MR CHETAN IS RESPONSIBLE FOR RUNNING ALL FACETS OF THE BUSINESS. HE IS A VISIONARY THINKER WITH GLOBAL PERSPECTIVE AND ENTREPRENEURIAL DRIVE. HE HAS AN EXPERIENCE OF OVER 20 YEARS IN THIS FIELD.

AS A MECHANICAL ENGINEER HIMSELF HE IS IN DEPTH INVOLVED WITH ALL THE ASPECTS OF MANUFACTURING. DEVELOPING A COMPREHENSIVE MARKETING PLAN AND IMPLEMENTING IT TO INCREASE BRAND AWARENESS AND RECOGNITION. ESTABLISHED A NETWORK OF LOCAL SUPPLIERS FOR EFFICIENT SOURCING OF MATERIALS.



ATTRACTIVE
FINISH



WEATHER PROTECTED
PLATING



VIRGIN MATERIAL



SENSIBLE DESIGN



VARIOUS PATTERN



EASY TO CLEAN



CORROSION
RESISTANCE



FOCUS ON
INNOVATION



SCRATCH
RESISTANCE



FINGERPRINT
RESISTANCE



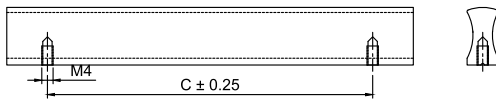
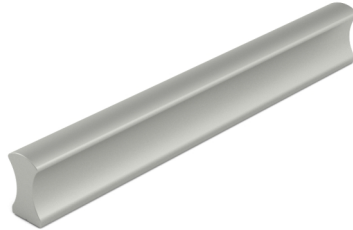
OLEOPHOBIC
COATING

SLIM FURNITURE HANDLE



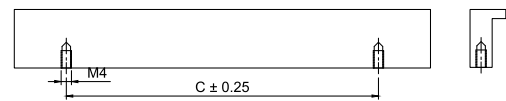
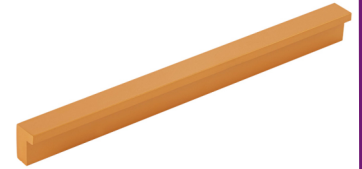
Model : SFH-001

Size	Product Code	C
32mm	SFH-001 32	32
64mm	SFH-001 64	64
96mm	SFH-001 96	96
128mm	SFH-001 128	128
160mm	SFH-001 160	160
192mm	SFH-001 192	192
224mm	SFH-001 224	224
256mm	SFH-001 256	256
288mm	SFH-001 288	288



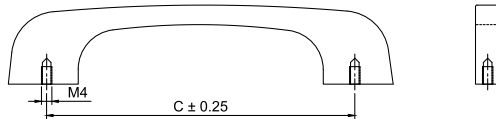
Model : SFH-002

Size	Product Code	C
32mm	SFH-002 32	32
64mm	SFH-002 64	64
96mm	SFH-002 96	96
128mm	SFH-002 128	128
160mm	SFH-002 160	160
192mm	SFH-002 192	192
224mm	SFH-002 224	224
256mm	SFH-002 256	256
288mm	SFH-002 288	288



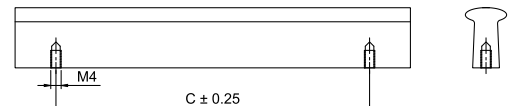
Model : SFH-003

Size	Product Code	C
102mm	SFH-003 102	102



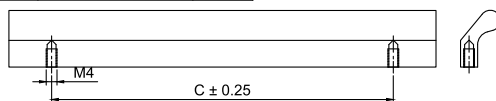
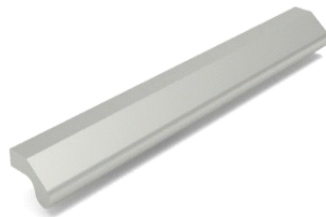
Model : SFH-004

Size	Product Code	C
32mm	SFH-004 32	32
64mm	SFH-004 64	64
96mm	SFH-004 96	96
128mm	SFH-004 128	128
160mm	SFH-004 160	160
192mm	SFH-004 192	192
224mm	SFH-004 224	224
256mm	SFH-004 256	256
288mm	SFH-004 288	288



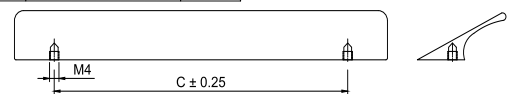
Model : SFH-005

Size	Product Code	C
32mm	SFH-005 32	32
64mm	SFH-005 64	64
96mm	SFH-005 96	96
128mm	SFH-005 128	128
160mm	SFH-005 160	160
192mm	SFH-005 192	192
224mm	SFH-005 224	224
256mm	SFH-005 256	256
288mm	SFH-005 288	288



Model : SFH-006

Size	Product Code	C
32mm	SFH-006 32	32
64mm	SFH-006 64	64
96mm	SFH-006 96	96
128mm	SFH-006 128	128
160mm	SFH-006 160	160
192mm	SFH-006 192	192
224mm	SFH-006 224	224
256mm	SFH-006 256	256
288mm	SFH-006 288	288



FINISH:

MT	CP	SP	MC	BM	RG	BA	CA
Matt	Chrome	Satin	Matt Chrome	Black Matt	Rose Gold	Brass Antique	Copper Antique

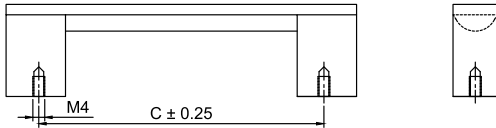
[★ Best Sellers] [Customisation In Length Is Possible.]

SLIM FURNITURE HANDLE



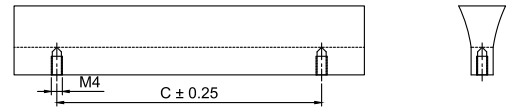
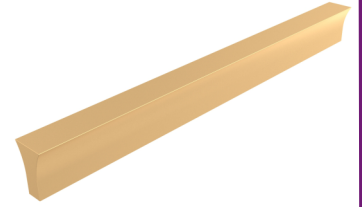
Model : SFH-007

Size	Product Code	C
★ 96mm	SFH-007 96	96
★ 128mm	SFH-007 128	128
★ 160mm	SFH-007 160	160
★ 192mm	SFH-007 192	192
★ 224mm	SFH-007 224	224
★ 256mm	SFH-007 256	256
★ 288mm	SFH-007 288	288



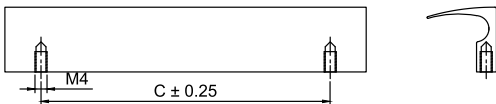
Model : SFH-008

Size	Product Code	C
★ 32mm	SFH-008 32	32
★ 64mm	SFH-008 64	64
★ 96mm	SFH-008 96	96
★ 128mm	SFH-008 128	128
★ 160mm	SFH-008 160	160
★ 192mm	SFH-008 192	192
★ 224mm	SFH-008 224	224
★ 256mm	SFH-008 256	256
★ 288mm	SFH-008 288	288



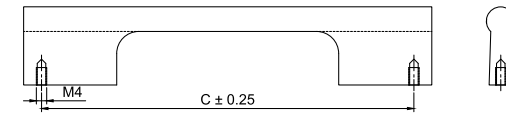
Model : SFH-009

Size	Product Code	C
★ 32mm	SFH-009 32	32
★ 64mm	SFH-009 64	64
★ 96mm	SFH-009 96	96
★ 128mm	SFH-009 128	128
★ 160mm	SFH-009 160	160
★ 192mm	SFH-009 192	192
★ 224mm	SFH-009 224	224
★ 256mm	SFH-009 256	256
★ 288mm	SFH-009 288	288



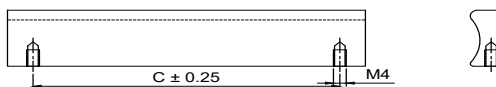
Model : SFH-010

Size	Product Code	C
★ 128mm	SFH-010 128	128
★ 160mm	SFH-010 160	160
★ 192mm	SFH-010 192	192
★ 224mm	SFH-010 224	224
★ 256mm	SFH-010 256	256
★ 288mm	SFH-010 288	288



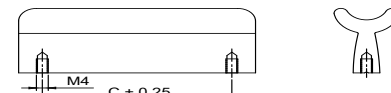
Model : SFH-011(HEAVY)

Size	Product Code	C
★ 32mm	SFH-011 32	32
★ 64mm	SFH-011 64	64
★ 96mm	SFH-011 96	96
★ 128mm	SFH-011 128	128
★ 160mm	SFH-011 160	160
★ 192mm	SFH-011 192	192
★ 224mm	SFH-011 224	224
★ 256mm	SFH-011 256	256
★ 288mm	SFH-011 288	288



Model : SFH-012

Size	Product Code	C
★ 32mm	SFH-012 32	32
★ 64mm	SFH-012 64	64
★ 96mm	SFH-012 96	96
★ 128mm	SFH-012 128	128
★ 160mm	SFH-012 160	160
★ 192mm	SFH-012 192	192
★ 224mm	SFH-012 224	224
★ 256mm	SFH-012 256	256
★ 288mm	SFH-012 288	288



FINISH:

MT	CP	SP	MC	BM	RG	BA	CA
Matt	Chrome	Satin	Matt Chrome	Black Matt	Rose Gold	Brass Antique	Copper Antique

[★ Best Sellers]

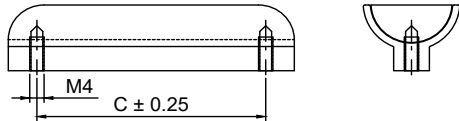
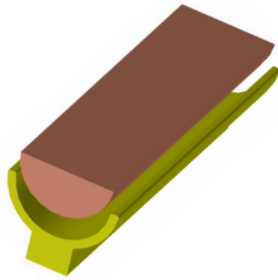
[Customisation In Length Is Possible.]

SLIM FURNITURE HANDLE



Model : SFH-013

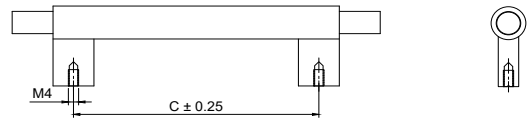
Size	Product Code	C
32mm	SFH-013 32	32
64mm	SFH-013 64	64
96mm	SFH-013 96	96
128mm	SFH-013 128	128
160mm	SFH-013 160	160
192mm	SFH-013 192	192
224mm	SFH-013 224	224
256mm	SFH-013 256	256
288mm	SFH-013 288	288



Model : SFH-014

Size	Product Code	C
32mm	SFH-014 32	32
64mm	SFH-014 64	64
96mm	SFH-014 96	96
128mm	SFH-014 128	128
160mm	SFH-014 160	160
192mm	SFH-014 192	192
224mm	SFH-014 224	224
256mm	SFH-014 256	256
288mm	SFH-014 288	288

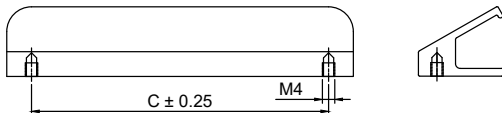
- ★
- ★
- ★
- ★
- ★
- ★
- ★



Model : SFH-015

Size	Product Code	C
32mm	SFH-015 32	32
64mm	SFH-015 64	64
96mm	SFH-015 96	96
128mm	SFH-015 128	128
160mm	SFH-015 160	160
192mm	SFH-015 192	192
224mm	SFH-015 224	224
256mm	SFH-015 256	256
288mm	SFH-015 288	288

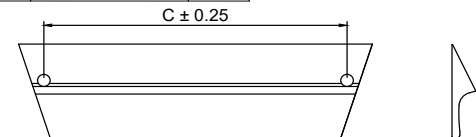
- ★
- ★
- ★
- ★
- ★
- ★
- ★



Model : SFH-016

Size	Product Code	C
32mm	SFH-016 32	32
64mm	SFH-016 64	64
96mm	SFH-016 96	96
128mm	SFH-016 128	128
160mm	SFH-016 160	160
192mm	SFH-016 192	192
224mm	SFH-016 224	224
256mm	SFH-016 256	256
288mm	SFH-016 288	288

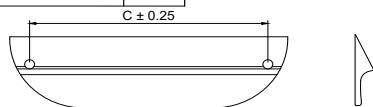
- ★
- ★
- ★
- ★
- ★
- ★
- ★



Model : SFH-017

Size	Product Code	C
32mm	SFH-017 32	32
64mm	SFH-017 64	64
96mm	SFH-017 96	96
128mm	SFH-017 128	128
160mm	SFH-017 160	160
192mm	SFH-017 192	192
224mm	SFH-017 224	224
256mm	SFH-017 256	256
288mm	SFH-017 288	288

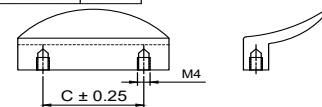
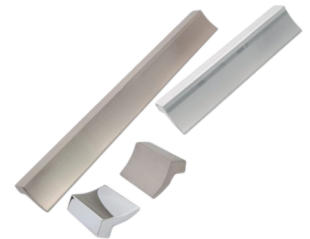
- ★
- ★
- ★
- ★



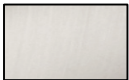







Model : SFH-018

Size	Product Code	C
32mm	SFH-018 32	32
64mm	SFH-018 64	64
96mm	SFH-018 96	96
128mm	SFH-018 128	128
160mm	SFH-018 160	160
192mm	SFH-018 192	192
224mm	SFH-018 224	224
256mm	SFH-018 256	256
288mm	SFH-018 288	288

- ★
- ★
- ★
- ★



FINISH:

							
Matt	Chrome	Satin	Matt Chrome	Black Matt	Rose Gold	Brass Antique	Copper Antique

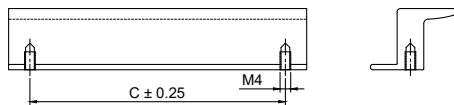
[★ Best Sellers] [Customisation In Length Is Possible.]

SLIM FURNITURE HANDLE



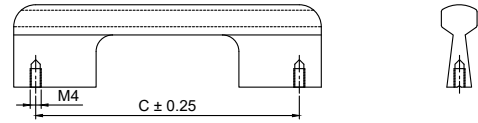
Model : SFH-019

Size	Product Code	C
★ 32mm	SFH-019 32	32
★ 64mm	SFH-019 64	64
★ 96mm	SFH-019 96	96
★ 128mm	SFH-019 128	128
★ 160mm	SFH-019 160	160
192mm	SFH-019 192	192
224mm	SFH-019 224	224
256mm	SFH-019 256	256
288mm	SFH-019 288	288



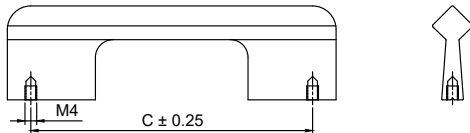
Model : SFH-020

Size	Product Code	C
★ 96mm	SFH-020 96	96
★ 128mm	SFH-020 128	128
★ 160mm	SFH-020 160	160
★ 192mm	SFH-020 192	192
★ 224mm	SFH-020 224	224
256mm	SFH-020 256	256
288mm	SFH-020 288	288



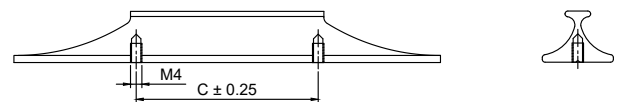
Model : SFH-021

Size	Product Code	C
★ 96mm	SFH-015 96	96
★ 128mm	SFH-015 128	128
★ 160mm	SFH-015 160	160
★ 192mm	SFH-015 192	192
★ 224mm	SFH-015 224	224
256mm	SFH-015 256	256
288mm	SFH-015 288	288



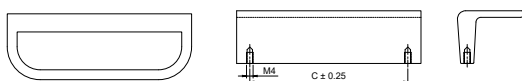
Model : SFH-022

Size	Product Code	C
★ 64mm	SFH-022 64	64
★ 96mm	SFH-022 96	96
★ 128mm	SFH-022 128	128
★ 160mm	SFH-022 160	160
★ 192mm	SFH-022 192	192
224mm	SFH-022 224	224
256mm	SFH-022 256	256
288mm	SFH-022 288	288



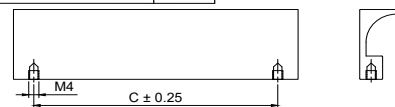
Model : SFH-023

Size	Product Code	C
★ 32mm	SFH-023 32	32
★ 64mm	SFH-023 64	64
★ 96mm	SFH-023 96	96
★ 128mm	SFH-023 128	128
★ 160mm	SFH-023 160	160
192mm	SFH-023 192	192
224mm	SFH-023 224	224
256mm	SFH-023 256	256
288mm	SFH-023 288	288



Model : SFH-024

Size	Product Code	C
★ 32mm	SFH-024 32	32
★ 64mm	SFH-024 64	64
★ 96mm	SFH-024 96	96
★ 128mm	SFH-024 128	128
★ 160mm	SFH-024 160	160
192mm	SFH-024 192	192
224mm	SFH-024 224	224
256mm	SFH-024 256	256
288mm	SFH-024 288	288



FINISH:

MT	CP	SP	MC	BM	RG	BA	CA
Matt	Chrome	Satin	Matt Chrome	Black Matt	Rose Gold	Brass Antique	Copper Antique

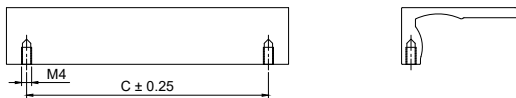
[★ Best Sellers] [Customisation In Length Is Possible.]

SLIM FURNITURE HANDLE



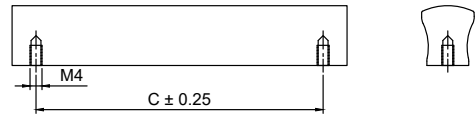
Model : SFH-025

Size	Product Code	C
32mm	SFH-019 32	32
64mm	SFH-019 64	64
96mm	SFH-019 96	96
128mm	SFH-019 128	128
160mm	SFH-019 160	160
192mm	SFH-019 192	192
224mm	SFH-019 224	224
256mm	SFH-019 256	256
288mm	SFH-019 288	288



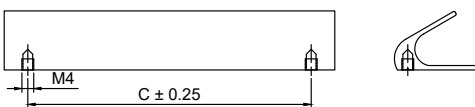
Model : SFH-026

Size	Product Code	C
32mm	SFH-019 32	32
64mm	SFH-019 64	64
96mm	SFH-019 96	96
128mm	SFH-019 128	128
160mm	SFH-019 160	160
192mm	SFH-019 192	192
224mm	SFH-019 224	224
256mm	SFH-019 256	256
288mm	SFH-019 288	288



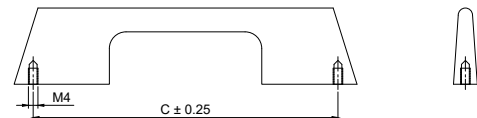
Model : SFH-027

Size	Product Code	C
32mm	SFH-019 32	32
64mm	SFH-019 64	64
96mm	SFH-019 96	96
128mm	SFH-019 128	128
160mm	SFH-019 160	160
192mm	SFH-019 192	192
224mm	SFH-019 224	224
256mm	SFH-019 256	256
288mm	SFH-019 288	288



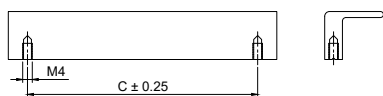
Model : SFH-028

Size	Product Code	C
128mm	SFH-028 128	128
160mm	SFH-028 160	160
192mm	SFH-028 192	192
224mm	SFH-028 224	224
256mm	SFH-028 256	256
288mm	SFH-028 288	288



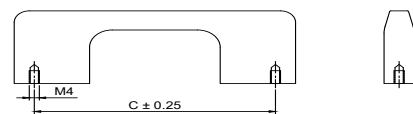
Model : SFH-029

Size	Product Code	C
32mm	SFH-029 32	32
64mm	SFH-029 64	64
96mm	SFH-029 96	96
128mm	SFH-029 128	128
160mm	SFH-029 160	160
192mm	SFH-029 192	192
224mm	SFH-029 224	224
256mm	SFH-029 256	256
288mm	SFH-029 288	288



Model : SFH-030

Size	Product Code	C
96mm	SFH-030 96	96
128mm	SFH-030 128	128
160mm	SFH-030 160	160
192mm	SFH-030 192	192
224mm	SFH-030 224	224
256mm	SFH-030 256	256
288mm	SFH-030 288	288



FINISH:

MT	CP	SP	MC	BM	RG	BA	CA
Matt	Chrome	Satin	Matt Chrome	Black Matt	Rose Gold	Brass Antique	Copper Antique

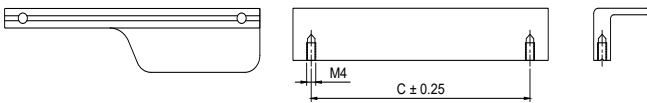
[★ Best Sellers] [Customisation In Length Is Possible.]

SLIM FURNITURE HANDLE



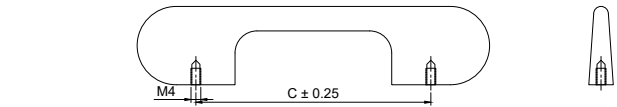
Model : SFH-031

Size	Product Code	C
★ 32mm	SFH-031 32	32
★ 64mm	SFH-031 64	64
★ 96mm	SFH-031 96	96
★ 128mm	SFH-031 128	128
★ 160mm	SFH-031 160	160
★ 192mm	SFH-031 192	192
★ 224mm	SFH-031 224	224
256mm	SFH-031 256	256
288mm	SFH-031 288	288



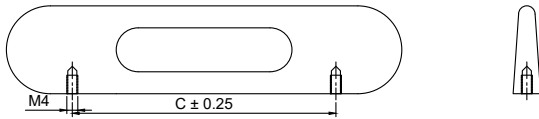
Model : SFH-032

Size	Product Code	C
★ 96mm	SFH-032 96	96
★ 128mm	SFH-032 128	128
★ 160mm	SFH-032 160	160
★ 192mm	SFH-032 192	192
★ 224mm	SFH-032 224	224
256mm	SFH-032 256	256
288mm	SFH-032 288	288



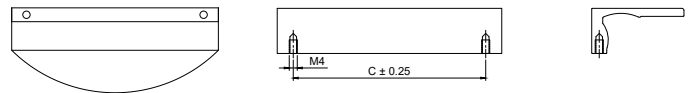
Model : SFH-033

Size	Product Code	C
★ 96mm	SFH-033 96	96
★ 128mm	SFH-033 128	128
★ 160mm	SFH-033 160	160
★ 192mm	SFH-033 192	192
★ 224mm	SFH-033 224	224
256mm	SFH-033 256	256
288mm	SFH-033 288	288



Model : SFH-034

Size	Product Code	C
★ 32mm	SFH-034 32	32
★ 64mm	SFH-034 64	64
★ 96mm	SFH-034 96	96
★ 128mm	SFH-034 128	128
★ 160mm	SFH-034 160	160
★ 192mm	SFH-034 192	192
★ 224mm	SFH-034 224	224
256mm	SFH-034 256	256
288mm	SFH-034 288	288



Model : SFH-035

Size	Product Code	C
★ 32mm	SFH-035 32	32
★ 64mm	SFH-035 64	64
★ 96mm	SFH-035 96	96
★ 128mm	SFH-035 128	128
★ 160mm	SFH-035 160	160
192mm	SFH-035 192	192
224mm	SFH-035 224	224
256mm	SFH-035 256	256
288mm	SFH-035 288	288



Model : SFH-036

FINISH:

MT	CP	SP	MC	BM	RG	BA	CA
Matt	Chrome	Satin	Matt Chrome	Black Matt	Rose Gold	Brass Antique	Copper Antique

[★ Best Sellers]

[Customisation In Length Is Possible.]

Terms & Conditions

1- DISCLAIMER

Manufacturing Agency reserves the right to discontinue or add any product, finish or design without prior notice. The sketches/drawings and images appearing in this price list have been included solely for guidance purposes only. They are not true to scale and do not represent any precise or binding design of the product. Copying or Duplicating the products is strictly prohibited. Only authorized resellers, franchise & distributors appointed by the company are allowed to possess, trade or sell products offered by and from the company. Illegal possession of the goods will result in prosecution.

2- AVAILABILITY

Manufacturing Agency endeavours to keep sufficient stock of the products mentioned in this price list. But orders falling out of average, if not in stock, would be intimated and supplied in due course as specified or agreed by customers in written. Manufacturing Agency requests customers to reconfirm stock position before commitment to the customers.

3- PRICES

All previous prices are superseded by this List Price along with price agreements of any kind with any party. All prices are subject to change without notice. All prices mentioned are Maximum Retail Prices (M.R.P.) i.e. inclusive of all taxes for the end user. All prices are Ex-works and in Indian Rupees (INR) only. The validity period of the price list also applies in case of products that are not included in this price list. All the information provided is subject to error and printing mistakes for which no liability will be accepted.

4- TAX & FREIGHT

Packing, Forwarding & Bardan Charges have to be borne by the buyer. CGST+SGST for Gujarat and IGST for other states would be applicable after the standard discount on the MRP. Additional Freight charges for prompt deliveries by air i.e. courier or flight charges has to be borne by the buyer along with necessary forms. The Tax rate will be subject to change as per the government notifications.

5- ORDERS

Receipt or Possession of this Price List does not grant approval to quote or purchase Manufacturing Agency Products. All orders will be fulfilled by the acceptance of Manufacturing Agency quantity at Manufacturing Agency Price at the time of order. Manufacturing Agency will accept orders via phone, email, fax, sms or courier. Manufacturing Agency reserves the right to decline orders in which the price or quantity of goods is not satisfactory. Any modification to the standard product configuration is considered to be a special order. For a special order the price will vary and no credits will be issued for returned special orders unless authorized by the Directors of Manufacturing Agency. Delivery period of such orders will be decided depending upon the manufacturing process time. Accuracy of phone orders will be determined by the receipt of a written sale order form and an acceptance of the same. The order reference issued on the form will be used for tracking the goods.

6- INVOICE

The final dispatch invoice will be sent to you for confirmation just before the dispatch and a written confirmation for the same will be required by you of that invoice. Any changes in the quantity, price or product etc. has to be rectified immediately and the goods will leave the warehouse only after your confirmation. Any changes will not be accepted later.

7- DELIVERY

We endeavor to make prompt shipment of all orders, but we shall not be held responsible for any loss or damage resulting from delay in filling orders due to causes beyond our control, including delivery of material to us. All responsibility ceases off the goods after it has left our warehouse. Goods intransit are at the risk of the buyer.

Terms & Conditions

8- CLAIMS

All claims due to errors or defects must be submitted, in writing, within 15 days after receipt of goods.

9- PROPER INSTALLATION& MAINTENANCE

Improper installations or any unguided product hampering is not a responsibility of Company.

It is the responsibility of the buyer to ensure the fitness of hardware for the intended purpose. We recommend assessment by appropriate testing in the application and by technical enquiry to our representatives or by understanding the manual provided with the product. Products may be sharp edged or blunt and heavy. Please handle with proper handling techniques and please keep all products away from the reach of children during or before installation. Keep the products in good condition and avoid contact with chemicals, water, paste, dirt and abuse to increase the life of the product. Finishes treated with protective coatings quickly deteriorate if the surface is broken. To prolong the life and maintain the original beauty of the material and the finish, it is important to avoid the use of paint removing solvents, acids, ambro tapes or other strong caustic cleaning solutions. Before painting doors, frames & woodwork. All hardware items should be removed and reinstalled after the paint is dry.

10- RETURNED GOODS

Company will not accept any return goods under any circumstances except manufacturing defects or warehouse mistakes. Customer has up to 6 Months from the date of invoice to return the goods in this case and all goods must be returned in original packaging and be in resalable condition, i.e. unaltered and non-degraded condition along with prior approval. Transportation charges of returned goods must be prepaid by the customer. Product not returned in saleable condition or after 6 Month of issue date is subject to disposal by Company with no credit issued.





Exclusive Interior Fittings.

MADE IN INDIA

MADE FOR WORLD

Mfg. By :

Komal
Manufacturing Co.

Factory Add: Plot No.27 Survey No.224,
Somnath Ind.5, Village:Kothariya,
Gondal Road, Rajkot, 360022.

Mkt.& Dist. By :

Konark
Manufacturing Co.

Office Add: 11/D-502,Neelam Nagar,Phase-2,
Gavan Pada,Mulund (E) Mumbai-400081

 www.konark8.com  info@konark8.com  +916357707700

E-mail : chetan@konark8.com
Contact Person : [Chetan Mehta](#)
Contact : [+91-7878757399](tel:+91-7878757399)



MADE IN INDIA
MADE FOR WORLD

